



Why choose osteopathy?

**Osteopathy is a
recognised Allied Health
Profession**

Around 30,000 people currently
consult osteopaths every working day

(Source GOsC)





You want to spend time getting to know your patients

As an osteopath you have the time to gain a full understanding of a person's health.

Osteopaths treat the patient not the disease.



You want to become an expert in the human body

Osteopaths are 'first contact practitioners' and have autonomy in the treatment plans of their patients.



You want flexibility in where you work and the hours you work

Osteopaths can be self-employed, work in a multi-disciplinary clinic, specialist clinic, work ² within the NHS or a combination of all of these.

Career prospects

A fulfilling life long career

There are 5,341 osteopaths on the UK
Statutory Register of Osteopaths (at 1
March 2019)

(Source GOsC)





A world of opportunities awaits upon graduation



LSO Graduates are working around the globe

- in their own clinics
- in multi disciplinary practices
- Teaching and education roles

Specialise in an area of your interest

- Women's health
- Animals
- Sports rehab
- Cranial
- Babies

the list goes on



Graduate Clinic

We are the only college that offers students the opportunity to work in the clinic post graduation

THE SCHOOL OF
OSTEOPATHY





Will I make a good student?

Successful LSO students:

Have a passion for the subject and the profession

A willingness to challenge oneself

Enjoy the shared journey of learning





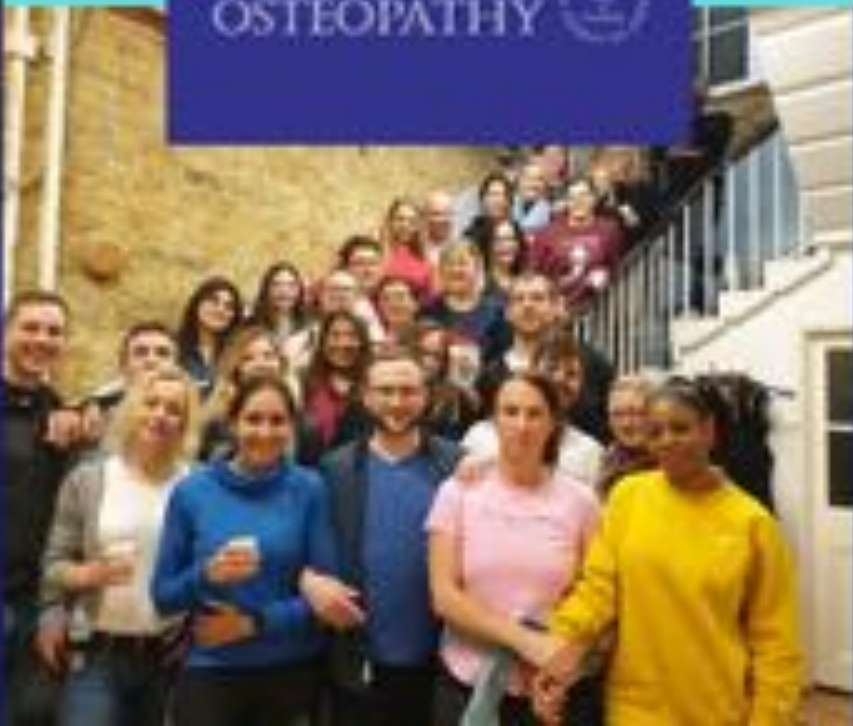
Students come to the LSO from a variety of backgrounds

At the LSO we see beyond your previous qualifications. We are looking for students who have certain aptitudes

THE LONDON SCHOOL OF
OSTEOPATHY 



- Empathy with people
- Interest in the human body and how it works
- Ability to work alone and think independently
- Able to work with others and follow procedures



- Have a scientific and enquiring mind
- Curious and creative
- Mature attitude
- Integrity & willingness to take responsibility



Course Overview

Practical learning is an important part of your studies at the LSO



Become a member of the Allied Health Profession with a recognised qualification

An accredited degree

Degrees are accredited by:

The General Osteopathic Council (GOsC). They are one of the 9 health care regulators. To practise in the UK you need to register with the GOsC.



General
Osteopathic
Council



Degrees are awarded by our validating body, Anglia Ruskin University

This gives you access to a range of learning resources from the ARU in addition to those provided by the LSO

Professional Body association

The LSO works closely with the Institute of Osteopathy (IO) and our students are enrolled as 'student' members



Member





Practical Osteopathy Lectures

From the first term you start at the LSO practical osteopathy lectures are an important part of your learning



Learning continues in the clinic

From your first year you will spend time in our dedicated teaching clinic based in Bethnal Green



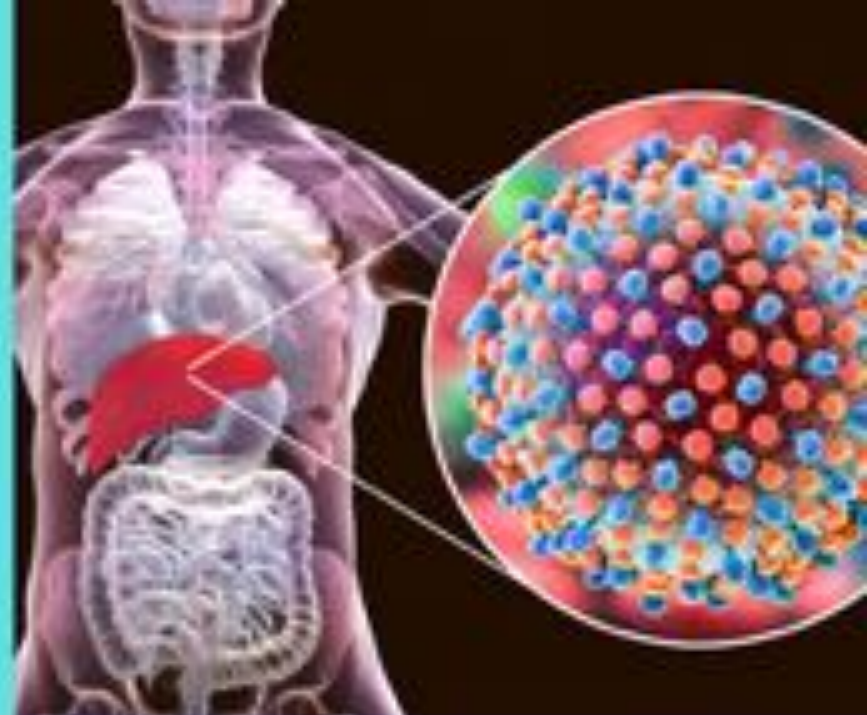
Osteopathy lecturers are all working in practice

All our osteopathy lecturers are practising osteopaths and bring current patient case histories and experiences into your learning



Anatomy

Study the relationship between all parts of the body, both musculo-skeletal system and internal organs



Physiology and pathology

Explore the function and dysfunction of the body



Osteopathy theory and principles

Explore osteopathic concepts and principles





Sociology and psychology

Understand how the body and the person are connected



Develop effective treatment techniques

Bring together your knowledge and put this into effective practice in patient care



Research

To help you to develop your practice and the osteopathic profession



At the heart of your learning

The London School of Osteopathy clinic has 8 treatment rooms

is open throughout the year

Where possible we provide flexibility for students to book in their clinic hours (8am-8pm in the week and 9am-5pm on alternate Saturdays)





Practical Clinical training takes place in our dedicated clinic from your first term in year one.

At the London School of Osteopathy our practical and theory sessions dovetail together to help students consolidate their learning.



You will see a diverse range of patients and conditions during your studies

In the clinic you will see people with sporting injuries, back/joint pain, arthritic pain, sciatica, postural problems and so much more



Clinical tutors have a wide range of specialisms which support your clinical learning

As practising osteopaths they bring a wealth of knowledge into the clinic which supports your learning



Flexibility in booking in your clinical hours

Each year carries a minimum number of hours but these hours can be exceeded if a student chooses. Students can sign up for early, middle and late shifts, and as far as practicable select their attendance patterns.



You will see a diverse range of patients and conditions during your studies

In the clinic you will see people with sporting injuries, back/joint pain, arthritic pain, sciatica, postural problems and so much more



Graduate Clinic

Our Graduate clinic provides support for graduates as they transition in their first year post graduation, into working in their own private practice.



From your first year you spend time in our teaching clinic. The number of hours increase as your studies progress

All your required clinic hours take place in here and there is no need for you to arrange placements outside the clinic



In the clinic you will get to meet and treat a diverse range of patients reflecting the diversity of the community we serve



Clinical tutors have a wide range of specialisms which support your clinical learning

The Clinical Experience

Clinical Case History & Health History

From your first term you are taught the importance of taking a patient's full case history enabling you to undertake holistic treatment of the person.



Patient Examination

You will be taught a variety of examination techniques in class. As your knowledge builds you are able to take a more active role in examining patients.



Differential Diagnosis

Once you have examined your patient, lead students and junior students will discuss the evidence with the Clinic Tutor to establish a diagnosis.



Treatment Plan & Intervention

The lead student agrees a treatment plan with the Clinic Tutor. Junior students watch and observe, as well as gaining some hands on experience.



Flexibility to suit you

A choice of full or part-time study and a choice of a MOst or BOst qualifications

The London School of Osteopathy is the only institution to offer this level of flexibility

At the end of your studies whichever route you choose you will have expert knowledge in the human body and be ready to join the osteopathic profession



All students are enrolled on the MOst pathway

MOst & BOst degree modules

COURSE STUDY	MOst	BOst
Osteopathy (all years)	✓	✓
Anatomy & Physiology	✓	✓
Clinical Pathology	✓	✓
Professional Studies	✓	✓
Research Studies	✓	✓
Differential Diagnosis	✓	✓
Extended Portfolio	✓	✗
Major Research Project	✓	✗
Clinical Training	1200 hrs	1000 hrs

You make your decision on which qualification you wish to graduate with during the penultimate year of your study alongside your tutors

The MOst & the BOst degree allow you to join the GOsC Register allowing you to practise in the UK

MOst and BOst students study side by side in modules that are common between the courses

The MOst qualification enables you to practise in more places outside of the UK (not USA)

BOst students (full time) can qualify in a shorter time, in their final year finish their studies at the end of the first semester.

Both options are available whether you study full-time or part-time



You are more than just a number!

Entry Routes

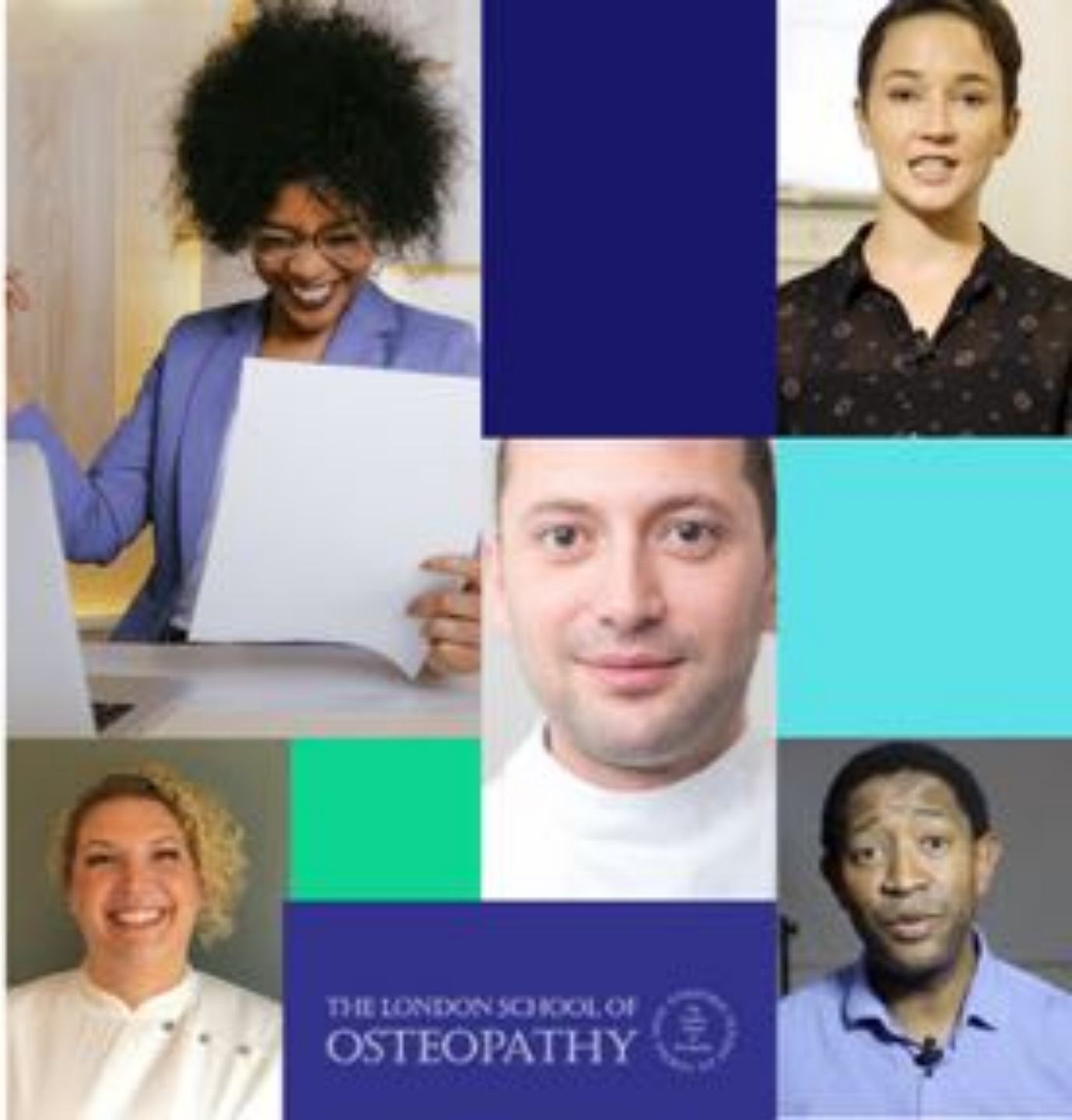
Standard Entry (under 21yrs): 104 UCAS Points

A-Levels (2 or preferably 3 including one science subject (e.g. Chemistry, Physics, Biology, Psychology, PE) plus GCSE Maths & English above Grade 4

Mature Students (21 yrs plus)

The LSO is committed to widening access in participation and consideration will be given to mature students with practical experience and vocational qualifications in other disciplines.

Unsure if you meet the requirements - please get in touch and we are happy to discuss your situation.





Next Steps

[Visit www.lso.ac.uk](http://www.lso.ac.uk)

For more information about the course and
the London School of Osteopathy

